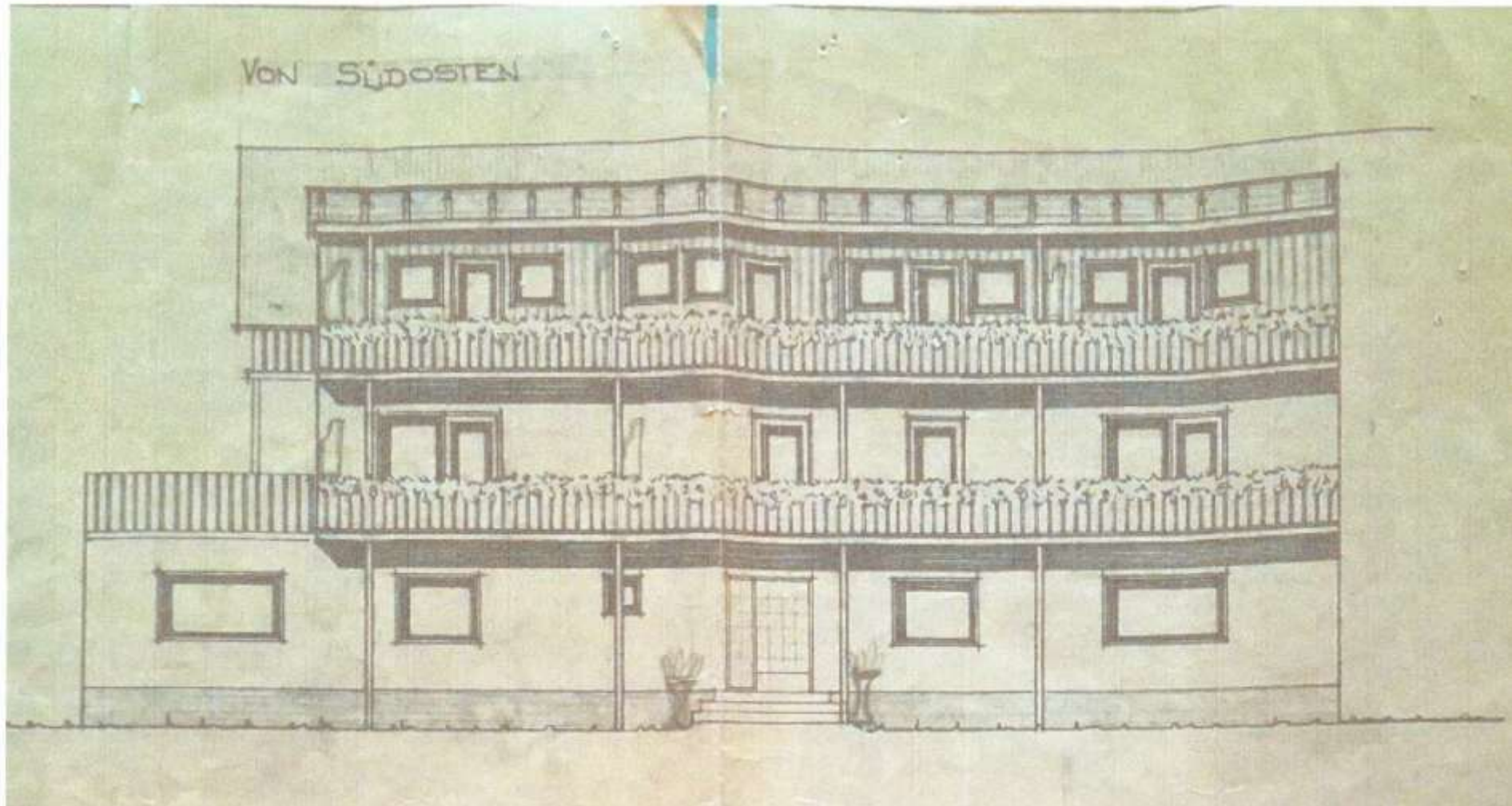
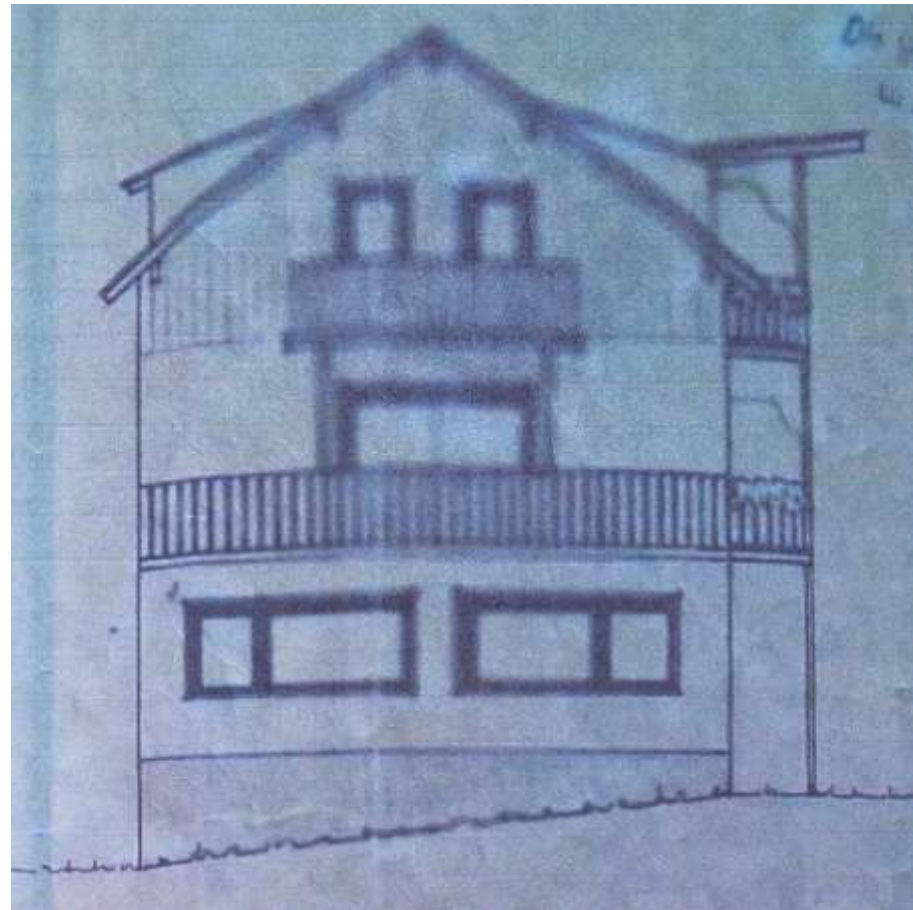


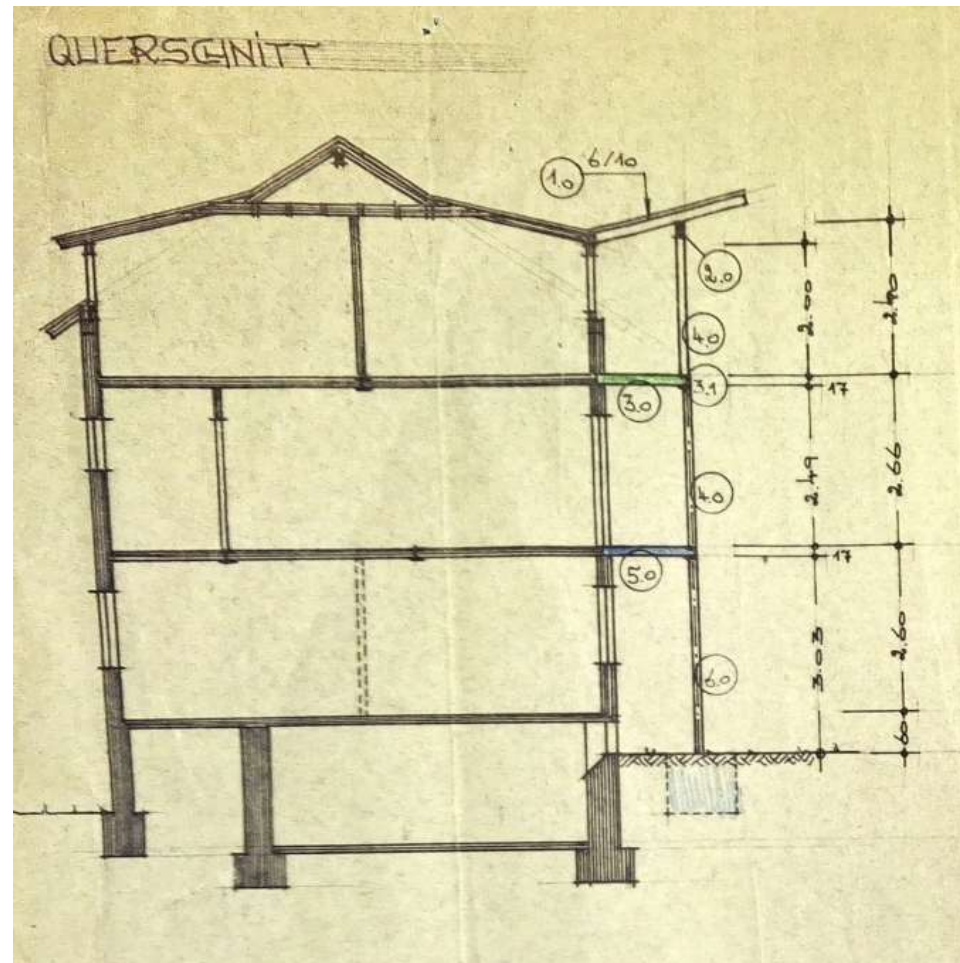
## P\_B01 Stammhaus Ansicht von Südosten



**P\_B02 Stammhaus Ansicht von West**

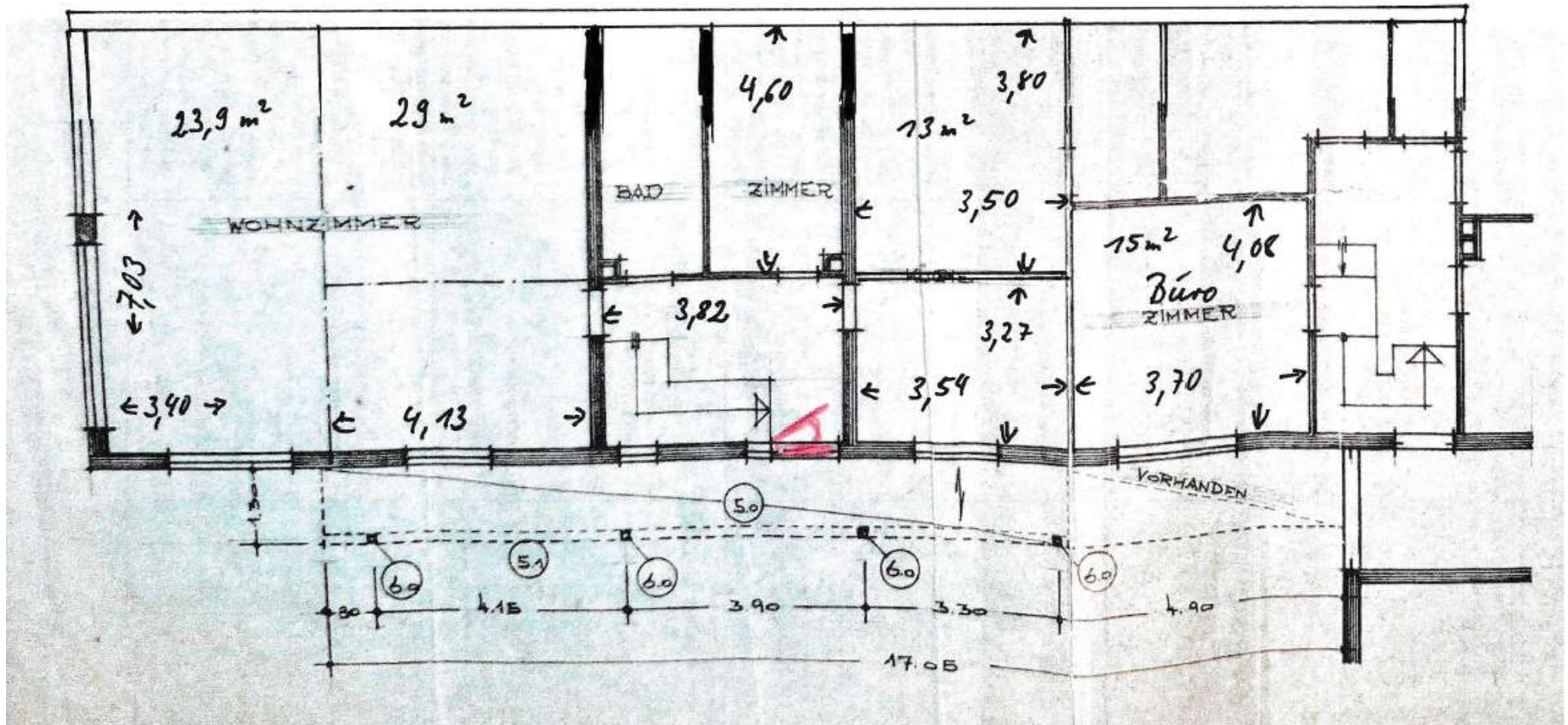


## P\_B04 Stammhaus Querschnitt

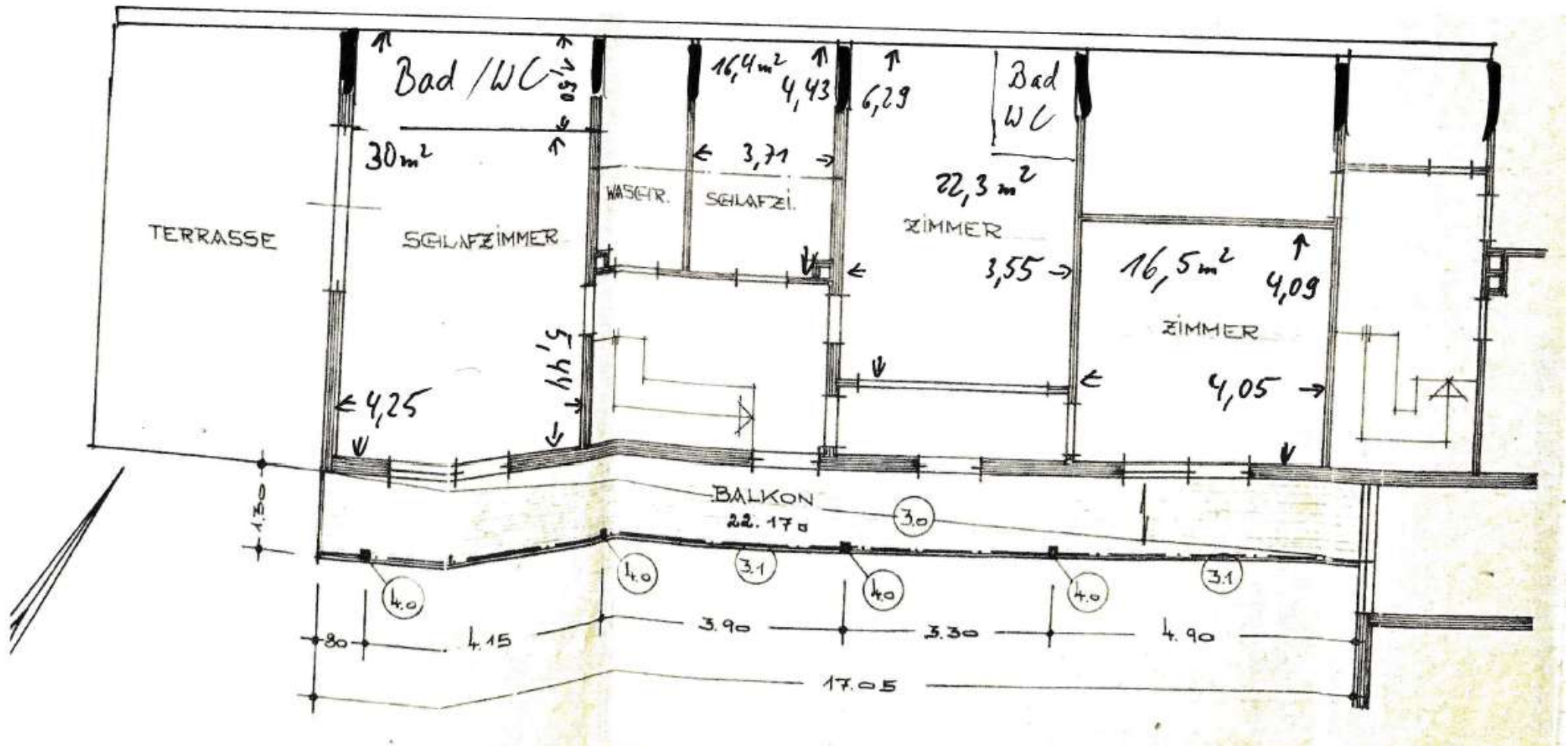




## P\_C01 Stammhaus Erdgeschoss



## P\_C02 Stammhaus Obergeschoss





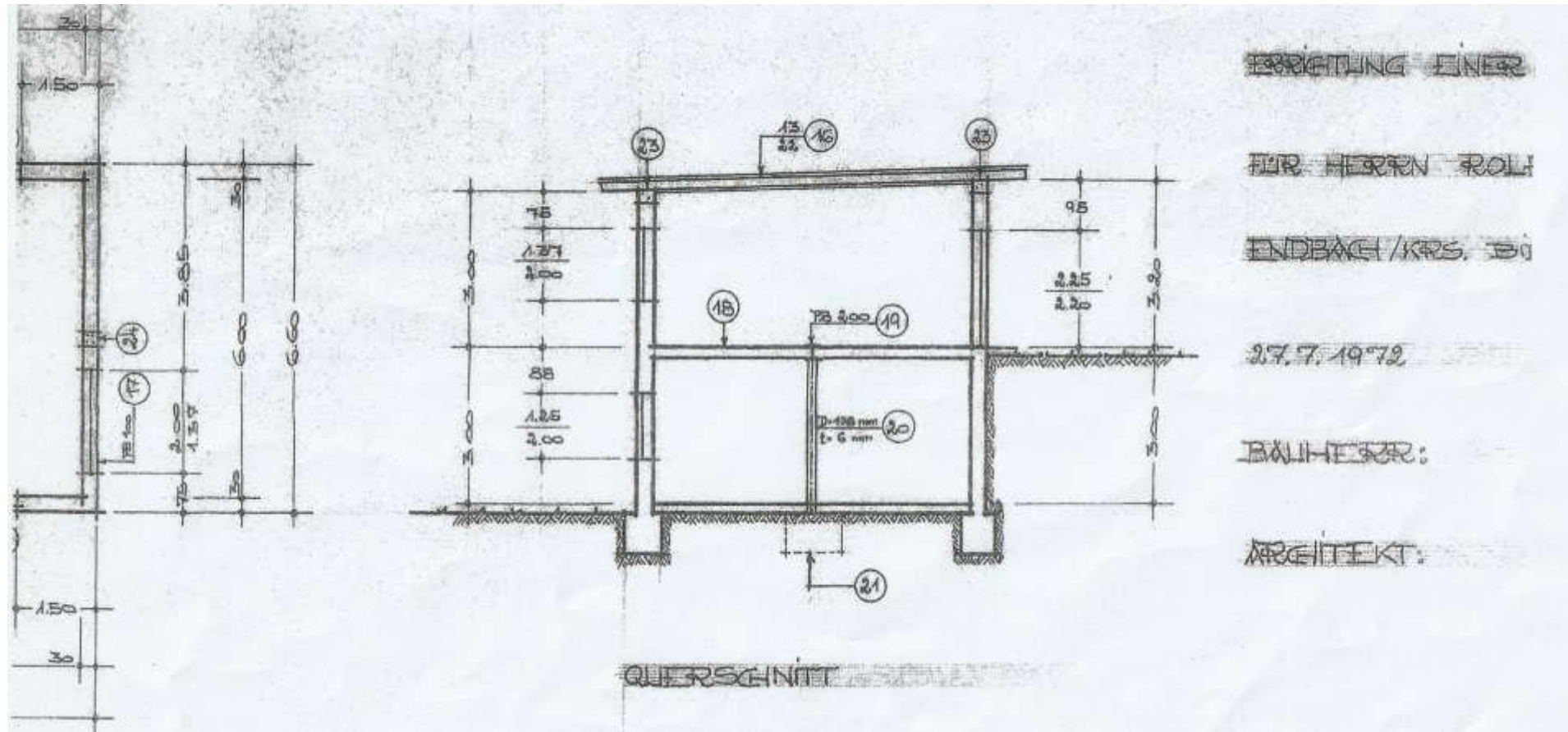
Hand-drawn floor plan of a residential unit. The plan includes the following rooms and dimensions:

- ZIMMER (Left):** 12,6 m<sup>2</sup>. Dimensions: 3,60 (width), 3,50 (depth).
- DIELE (Hallway):** Central area connecting rooms.
- ZIMMER (Middle):** 10 m<sup>2</sup>. Dimensions: 3,30 (width), 3,05 (depth).
- ZIMMER (Right):** 11,5 m<sup>2</sup>. Dimensions: 5,09 (width), 2,26 (depth).
- BALKON (Balcony):** 22,17 m<sup>2</sup>. Dimensions: 4,15, 3,90, 3,30, 4,90 (width segments), 2,0 (depth).

Additional dimensions and calculations shown on the plan:

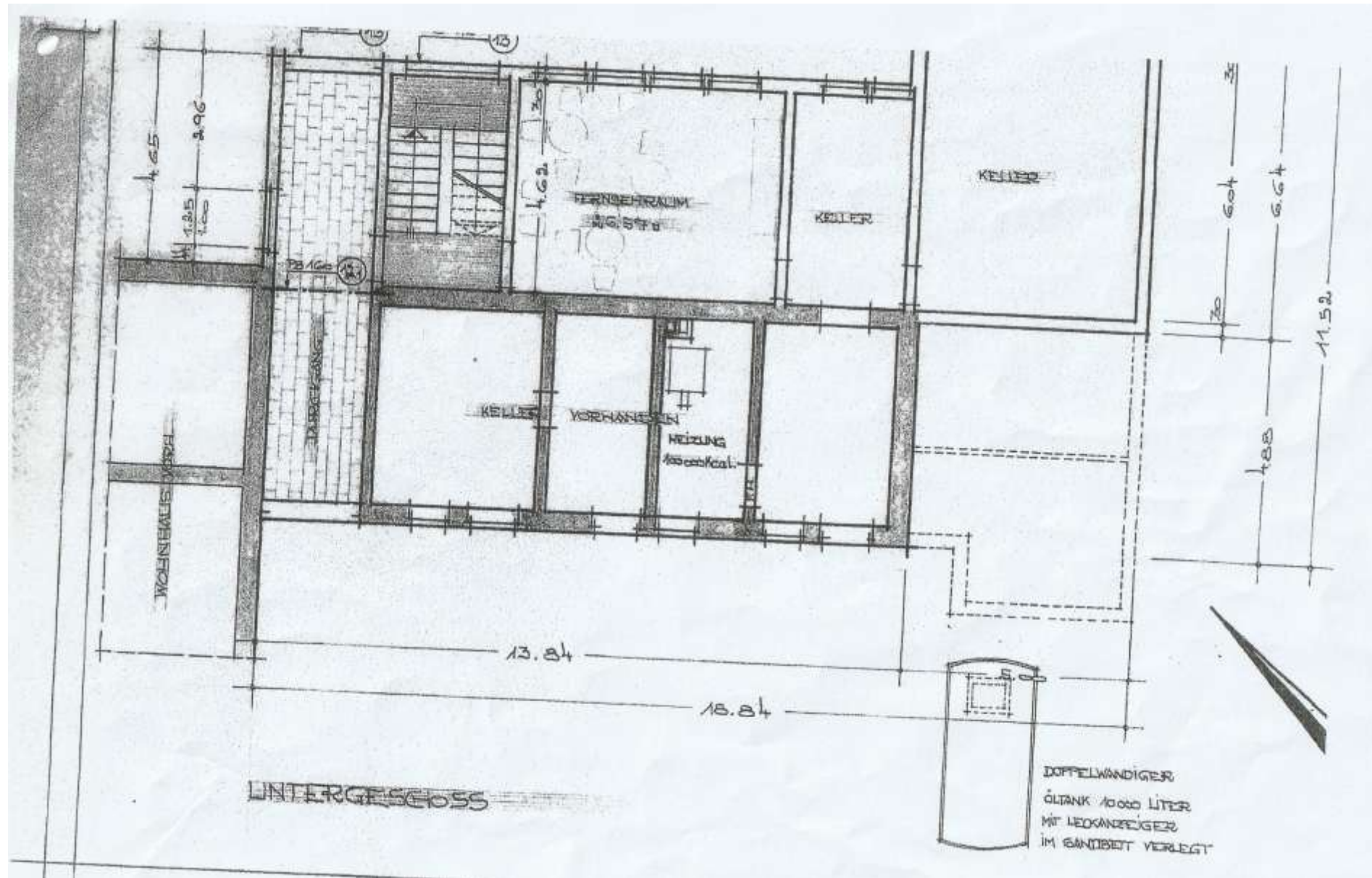
- Overall width: 17,05.
- Overall depth: 1,30.
- Room dimensions: 2,56, 2,90, 3,70, 3,00, 2,80, 14,2.
- Area calculations: 7,4 m<sup>2</sup>, 11,1 m<sup>2</sup> (?), 7,8 m<sup>2</sup> (?), (2) 5,09, (0) 2,80.

## P\_D00 Neubau Querschnitt





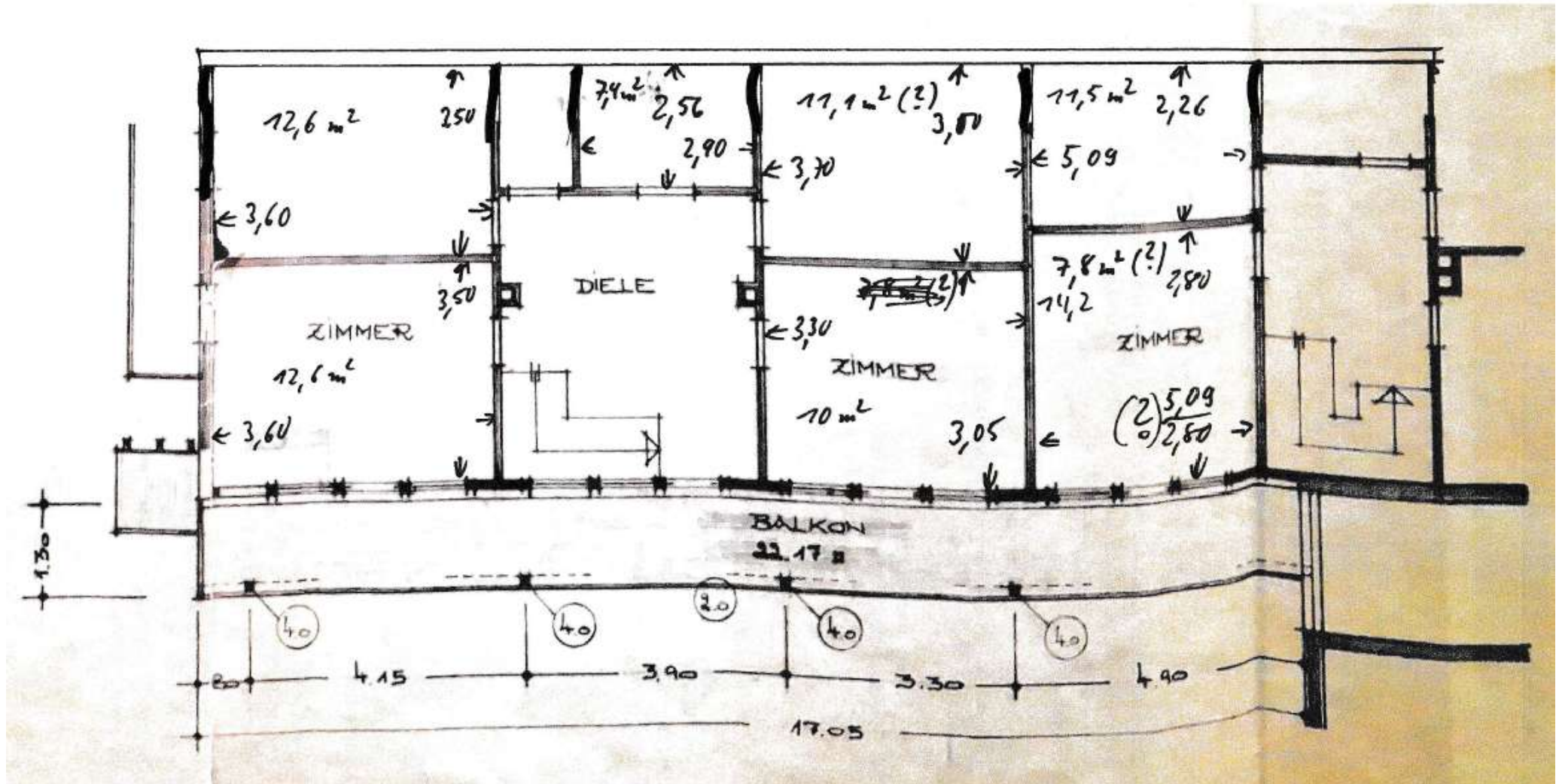
# P\_D01 Neubau Untergeschoss





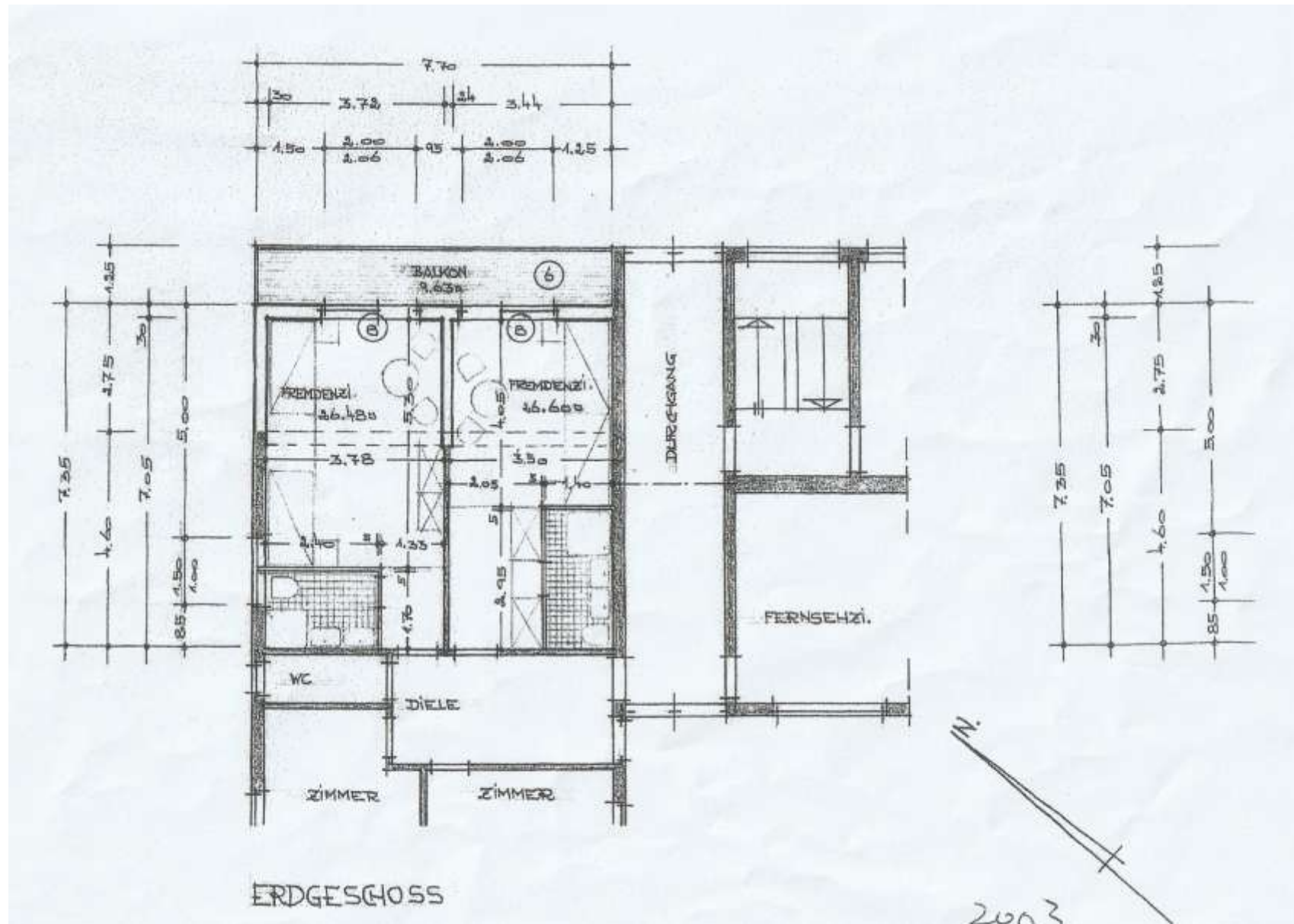
[illegible]

## P\_D03 Neubau Obergeschoss



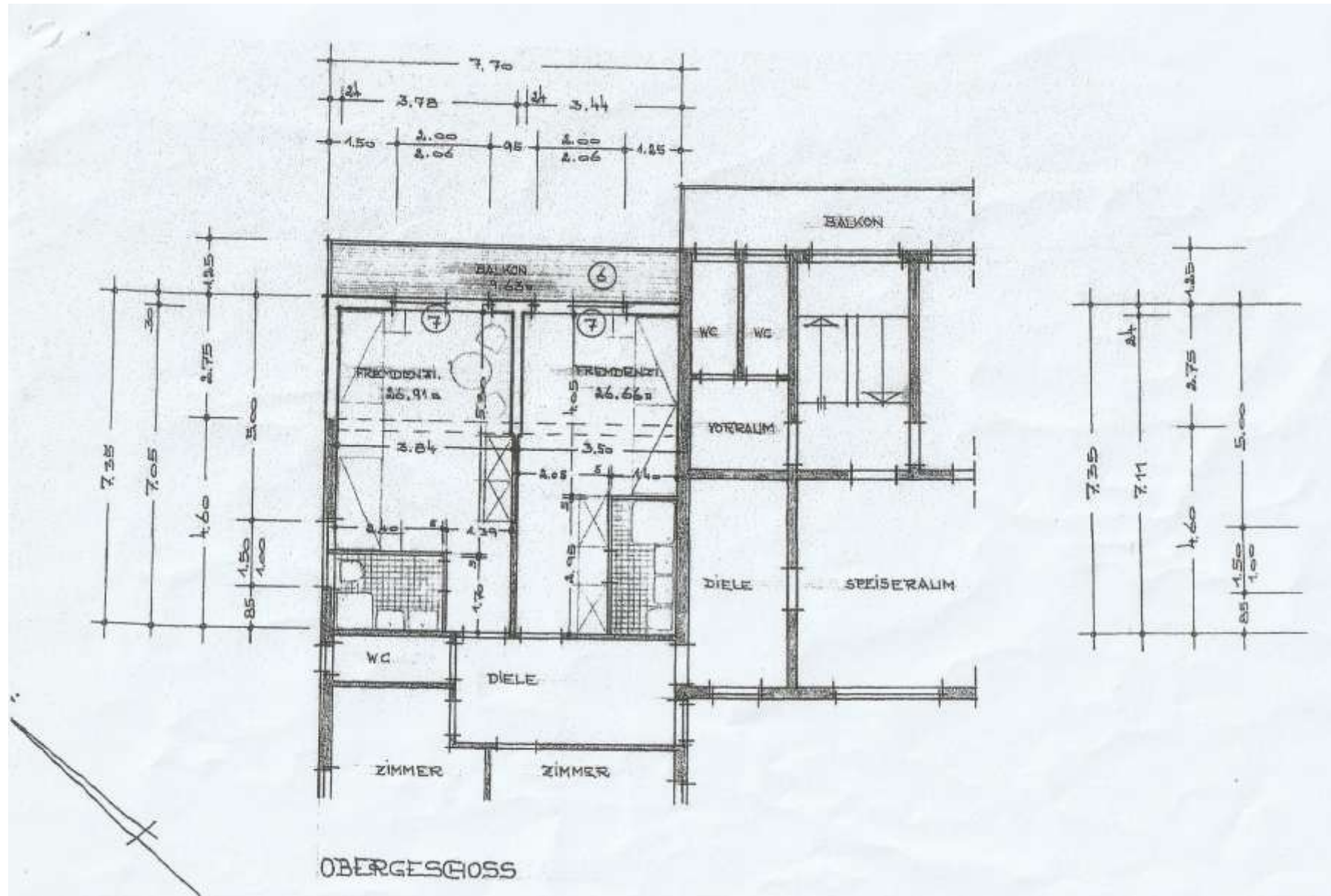


# P\_E01 Kreuzbau Erdgeschoss

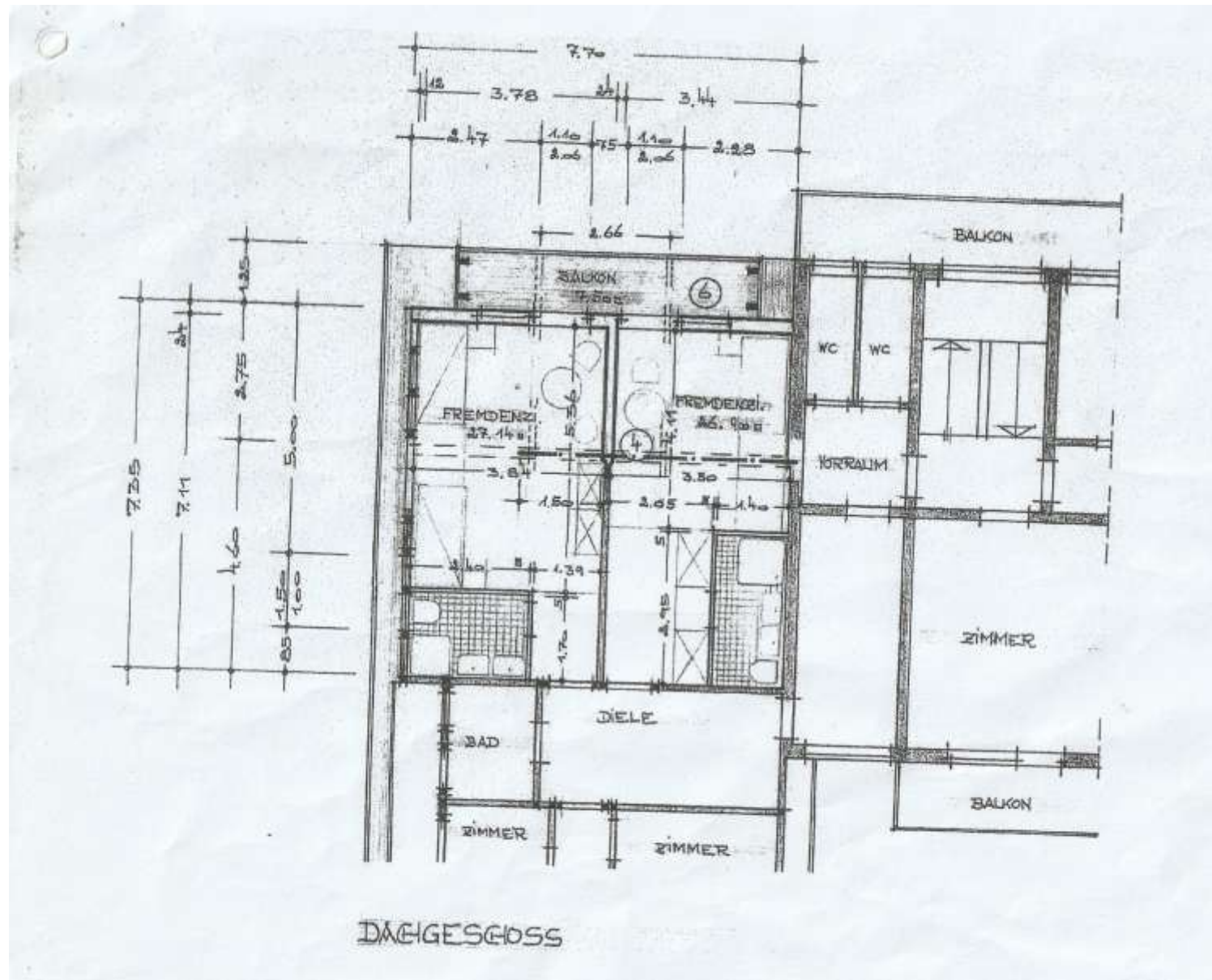




## P\_E02 Kreuzbau Obergeschoss



## P\_E03 Kreuzbau Dachgeschoss



[illegible]



## P\_F02 Werkstatt Erdgeschoss

